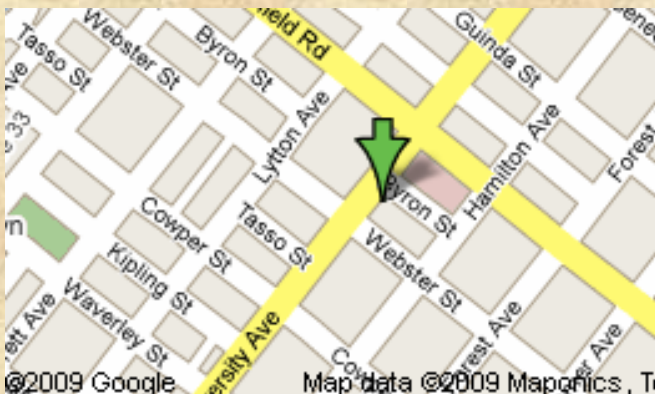


OFFICE FOR LEASE

624 University Ave., Palo Alto



- ◆ **Office Suite:** 2nd floor, 2 corner offices overlooking University Ave (as shown above)
- ◆ **Layout:** one larger private office, one smaller private office (See Floor Plan.)
- ◆ **Natural Light:** good light from operable windows, plus central A/C and heating
- ◆ **Ample Common Areas:** Share reception & kitchen; occasional conference room use
- ◆ **Setting:** Newly landscaped
- ◆ **Prime Location:** University Avenue near Webster St (See map.)
- ◆ **Amenities:** Downtown cafes, shopping, services, transit
- ◆ **Term:** multi-year lease preferred
- ◆ **Parking:** City's Cowper-Webster garage is 1 blocks away (free & by permit)
- ◆ **Available:** 30 days notice (possibly less)



Contact: Mike L. Meffert or Brian Kelley

Alhouse Deaton

MANAGEMENT & LEASING, INC.

Stanford Financial Square
2600 El Camino Real, Suite 100
Palo Alto, CA 94306
Mike Meffert, (650) 207-4754
Brian Kelley, (650) 857-0116, ext. 100
Fax. (650) 852-0361

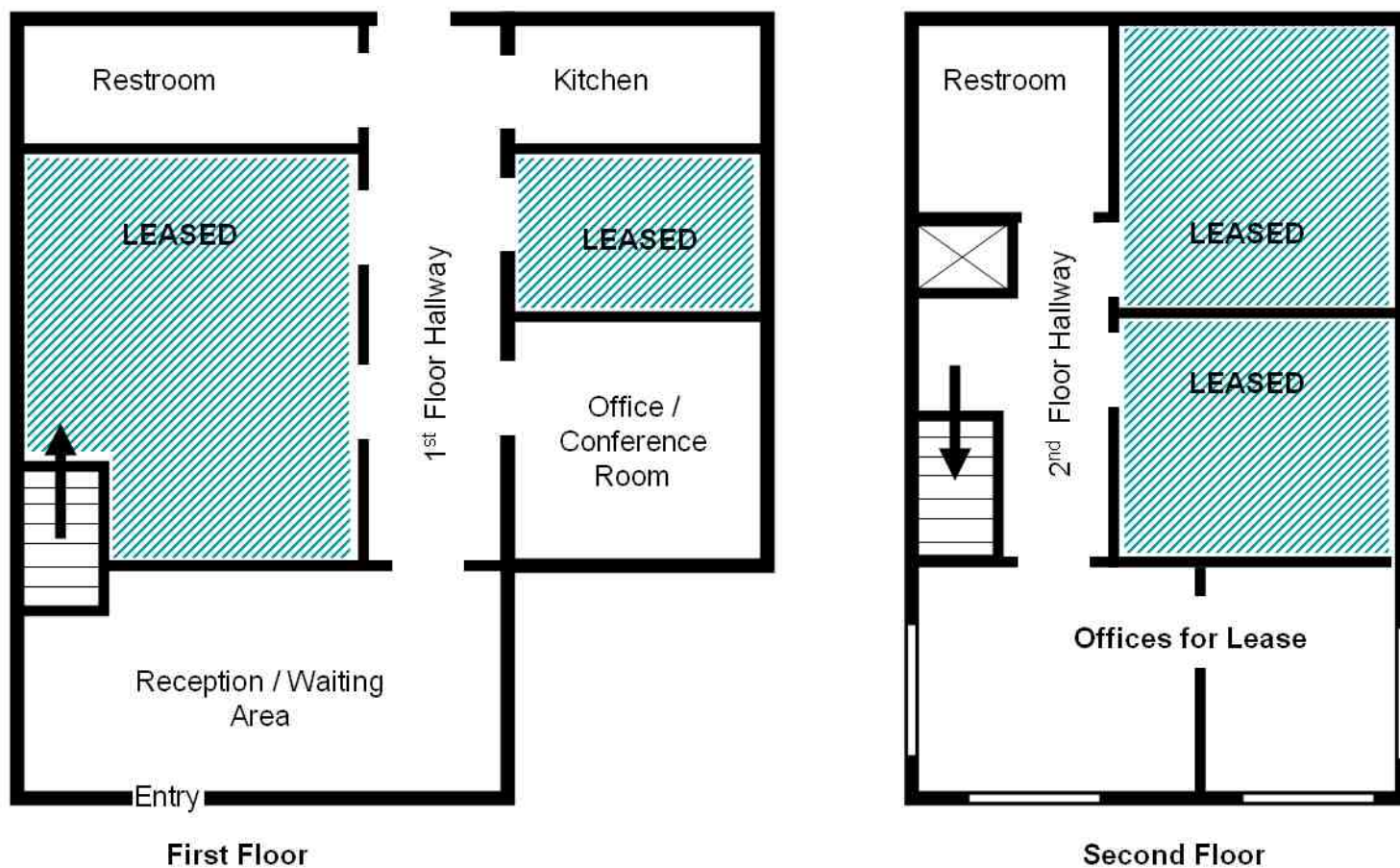
mmeffert@alhousedeaton.com,
bkelley@alhousedeaton.com

OFFICE FOR LEASE

624 University Ave., Palo Alto

Floor Plan

Not Exact. Not To Scale.



624 UNIVERSITY AVE.

"The information contained herein has been given to us by the owner of the property or other sources we deem reliable. We have no reason to doubt its accuracy, but we do not guarantee it."

Contact: Mike L. Meffert or Brian Kelley

Alhouse Deaton

MANAGEMENT & LEASING, INC.

Stanford Financial Square

2600 El Camino Real, Suite 100

Palo Alto, CA 94306

Mike Meffert, (650) 207-4754

Brian Kelley, (650) 857-0116, ext. 100

Fax. (650) 852-0361

mmeffert@alhousedeaton.com,

bkelly@alhousedeaton.com